

204 Series USB Data Logger

The 204 USB data logger can be used with the most popular sensor types for flexibility and 24 bit resolution for accuracy. Ease of use comes as standard with most common sensor calibrations quickly selectable. Just plug the data logger into your computers USB port, run the supplied setup and data acquisition/chart recorder software to be ready to go in minutes. The 204 USB data logger is supplied as a complete data acquisition system with Windows setup and data acquisition/chart recorder software, full instructions and the connecting USB cable.



Key Features

- 4 universal differential analogue input channels
- Addition frequency and digital inputs.
- Multiple quick select sensor types.
- High accuracy 24 bit measurement.
- Start on alarm/trigger (High/Low) for any input.
- USB communication and bus powered.
- Quick change universal input connector.

Inclusive USB communication and software suite. (cable supplied).

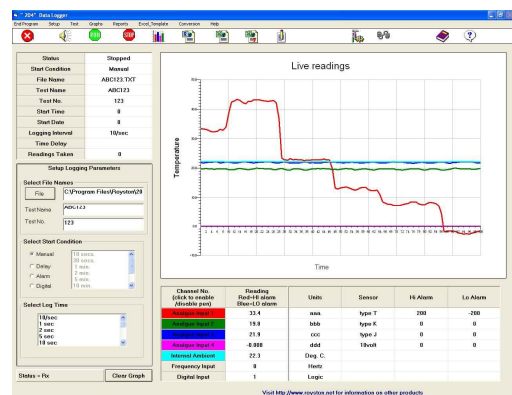
Review and archive all recorded data.

Graphical interface for ease of use.

Export directly into your Excel Spreadsheets with templates or in standard Comma Separated Variable (CSV) format.

Completely setup all data logging parameters for immediate start in field.

Customer calibration feature with password protection.



General Specifications

Analogue Inputs : 4 off differential for voltage ranges 200mV, 2V, 5V,10V
: and J,K,T,R & N thermocouples.

Voltage Range	200mV	2V	5V	10V
Resolution	10 μ V	100 μ V	1mV	1mV

Temperature Sensor	Type J	Type K	Type T	Type R	Type N
Resolution	0.1°C	0.1°C	0.1°C	0.1°C	0.1°C
Range	+1000°C -200°C	+1300°C -250°C	+390°C -250°C	+1600°C 0°C	+1200°C -250°C

Digital Inputs : 1 off digital (volt free) or 5V Logic
: 1 off frequency 0 to 50KHz (5V logic)

Isolation : Galvanic isolation between Data Logger and USB port.

Communication : USB port for computer collecting data

Resolution : 24 bit A-D CMOS converter

Logging Interval : Selectable 0.1 Second to 1 Hour.

Connections : Input connections via two part 12 way screw terminals on front panel
: USB connector on rear panel

Indicators : 3 LED's on rear panel for Power, Receive and Transmit

Cold Junction : NTC 10K 0.1 resolution, $\pm 0.3^\circ\text{C}$. (Thermocouple J,K,T only)

Digital : Voltage free contact or 5 volt CMOS logic (100K internal pull-up)

Frequency : 0-50KHz 5V CMOS Logic (100K internal pull-up)

USB Power : 5V @ typically 120mA

USB Cable : Type A-B connectors 1.5 metre length (Max 3m recommended)

USB/Input Isolation : 1000V DC

Software : Windows communications and data logging software
: Suitable for Windows 98SE, Me, 2000 and XP

Environment : Operating - 0 to +50°C and 5 to 90% humidity non condensing.
: Storage -20 to +70°C and 5 to 90% humidity non condensing

Construction : High Quality anodised aluminium enclosure

Dimensions : 35mm high x 105mm wide x 170mm deep including terminals

Weight : 260 grams.